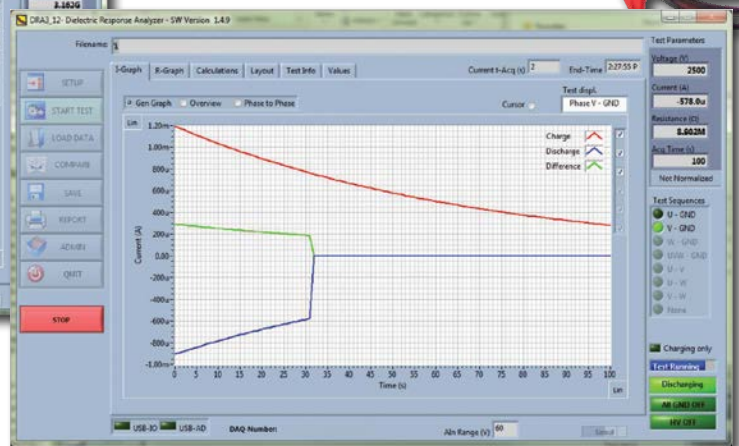
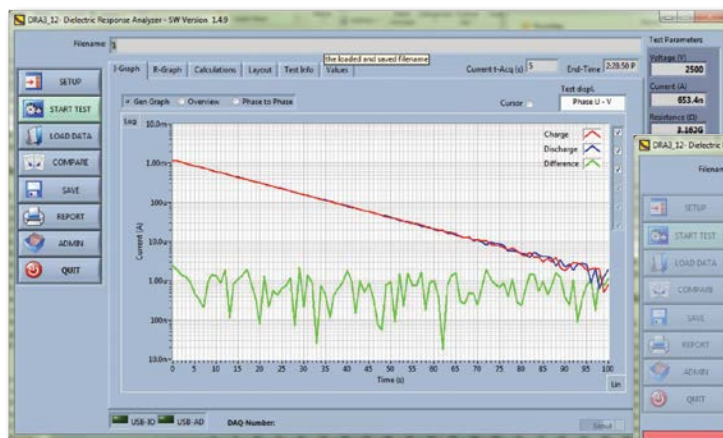


# PDTech Dielectric Response Analyzer (DRA-3) for Off-Line Insulation Diagnosis of Generator and Motor Windings

The dielectric response analyzer is used for off-line insulation diagnosis for generators and motors and is also applicable to transformers. It measures the charging and discharging currents (also called polarization and depolarization currents or PDC) of the winding of stator or rotor insulation. The resulting measurement provides information on the condition of machine insulation, such as, cleanliness, ageing, resin decomposition and resin cure.

The PDTech DRA-3 System allows you to connect all three phases and the ground at one time. The phases are measured sequentially step by step, without any interaction from test personnel. The measurement steps are automatically controlled and stored by a computer connected to the instrument.

The PDTech DRA-3 System also allows the possibility to measure all three phases together to ground, each phase separately and between the phases. Once data is stored, it can be analyzed by the evaluation program in order to get a complete report of the measurement including standard parameters such as insulation resistance, polarization index, etc.



# PDTech Dielectric Response Analyzer (DRA-3)

## HARDWARE SPECIFICATIONS

Input Voltage	Universal 90 to 240 VAC
Voltage Supply for Notebook	Same as input voltage (galvanically insulated)
Warning Light	Connector for warning light, indicating a high voltage is present
High Voltage	Integrated floated DC high voltage source, up to 10 kV, preset voltages 0.5, 1, 2.4, 5 and 10 kV, 1 mA
High Voltage Control	Integrated 10 kV Reed relay controlled with Digital I/O PC card
Shunt for Current Measurement	1 M $\Omega$
Current Measurement Range	1 mA to 0.1 nA, resolution 1 pA

## SOFTWARE SPECIFICATIONS

Data Acquisition	Fully automatic for measurement: separate phase to ground, all phases together, and between phase analysis
Evaluation	Automatic calculation of parameters as polarization index, insulation resistance, absorption index, etc
Comparison	Included software for comparison of up to 4 different measurements
Data Report	Automatic export to Microsoft Excel 2000 and above

## INSTALLATION KIT CONTENTS

- DRA3 instrument
- Transit Case
- Power Cable
- 4 HV Cables
- 3 Red Alligator Clips
- 1 Black Alligator Clip
- A 5 m USB Cable
- Operating Manual
- Software kit CD

## ORDER

**HVDRA:** DRA 3 Dielectric Response Analyser, charging/ discharging current measurement, up to 10 kV

QUALITROL-IRIS POWER HAS BEEN THE WORLD LEADER IN MOTOR AND GENERATOR WINDING DIAGNOSTICS SINCE 1990, PROVIDING A FULL LINE OF ON-LINE AND OFF-LINE TOOLS, AS WELL AS COMMISSIONING AND CONSULTING SERVICES.



A **QUALITROL** Company

[www.irispower.com](http://www.irispower.com)

[www.qualitrolcorp.com](http://www.qualitrolcorp.com)

**Iris Power LP**  
3110 American Drive  
Mississauga, ON, Canada L4V 1T2  
Phone: +1-905-677-4824  
Fax: +1-905-677-8498  
Sales.iris@qualitrolcorp.com

**Qualitrol Company LLC**  
1385 Fairport Road  
Fairport, NY, USA 14450  
Phone: +1-585-586-1515  
Fax: +1-585-377-0220



**QUALITROL**  
Defining Reliability

Ver 1 • 1/13